



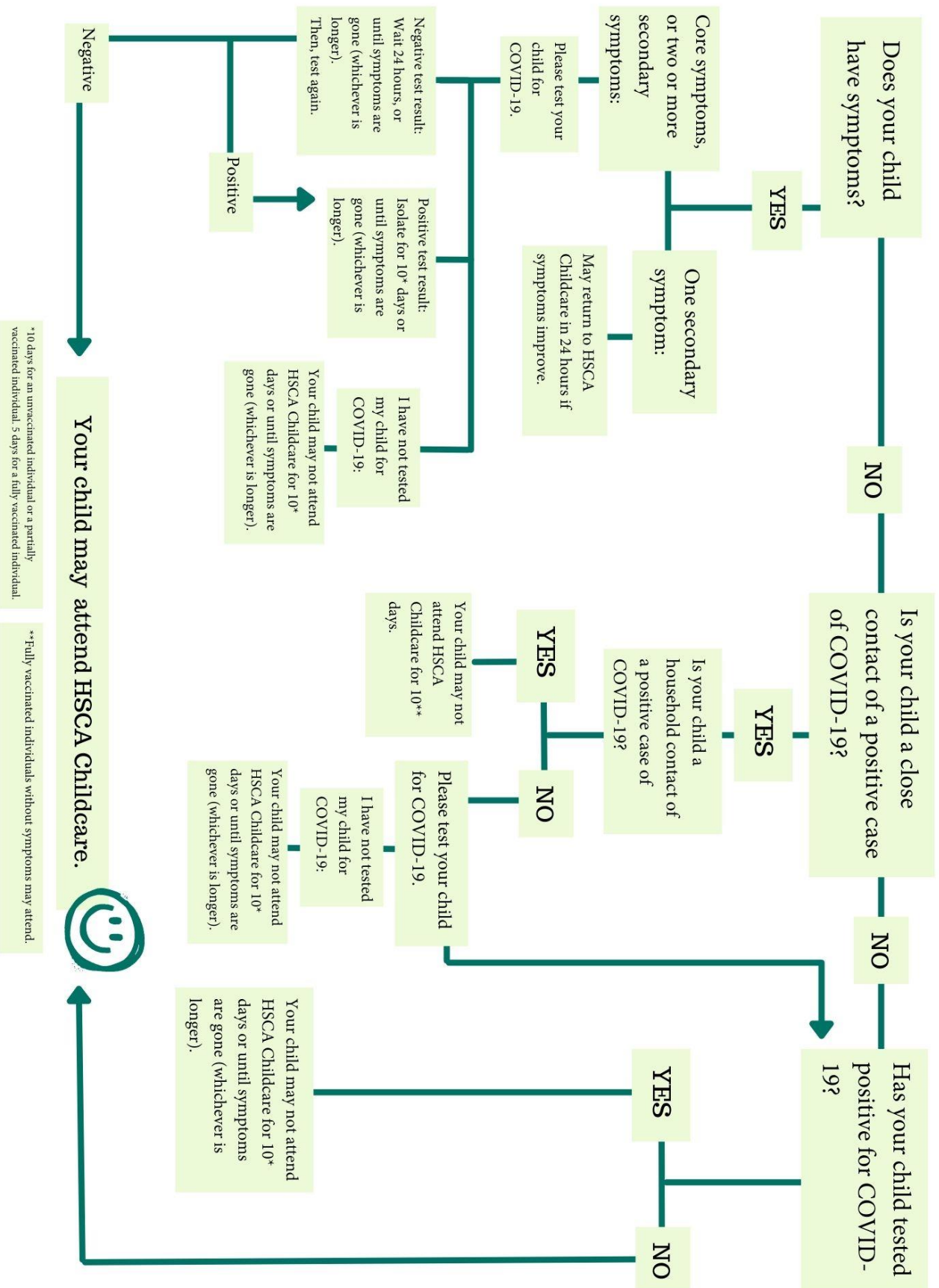
**Guidelines/additional public health measures for HSCA Childcare:**  
**Daycare**

<p><b>Overview/ Safety</b></p>	<ul style="list-style-type: none"> <li>• The daycare operates with five cohorts: combining at the beginning and end of day only, as infrequent as possible. We have 2 separate entrances to support spacing of cohorts entering/exiting the program</li> <li>• Masking is mandatory for all Educators and Management indoors</li> <li>• HSCA Childcare programming places focus on fit and filter of a mask, rather than a specific type</li> <li>• Staff members, parents/guardians and children must not attend the program if they are sick, <b>even if symptoms resemble a mild cold.</b></li> <li>• Temperature checks and symptom screening may take place throughout the day as educators see fit for both children and staff</li> <li>• In the event of a program closure, illness, or close contact of COVID-19, refunds will not be provided</li> <li>• Cohorts will open exterior doors throughout the day to circulate and clear interior air, improving air quality</li> <li>• HSCA Childcare Programs conduct an Active Consent for COVID-19 that guardians fill out upon registration. Parent's/Guardian's must assess their child for symptoms prior to the child entering the building</li> <li>• Travel outside the province and country follows guidelines of AHS and the Federal Government. Please see <a href="#">here</a> for more details</li> <li>• All childcare Educators are fully vaccinated</li> </ul>
<p><b>Illness</b></p>	<ul style="list-style-type: none"> <li>• If a child develops symptoms (core or secondary) while at the program, the parent/guardian will be called to pick up immediately. A designated care staff will wear a mask during all interactions with the child to avoid possible transmission until they are picked up from the center. If possible, the child will also be asked to wear a mask (those over 2)</li> <li>• <b>Core symptoms include</b> Fever, cough, shortness of breath, loss of sense of smell or taste</li> <li>• <b>Secondary symptoms include</b> Chills (without a fever), sore throat/painful swallowing, runny nose, congestion, feeling unwell/fatigues, nausea, vomiting, diarrhea, unexplained loss of appetite, muscle/joint aches, headache, conjunctivitis</li> <li>• Management will contact families of specific cohorts if a child within that room has been sent home due to fever/cough, or if a positive case has been identified. If a positive case has been identified, all cohorts will be notified</li> <li>• If a positive case is identified in a cohort, <b>all children</b> identified as close contacts must test negative for COVID-19 before returning to care. If a</li> </ul>



	<p>child does not take a COVID-19 test, they are unable to attend Daycare for 10 days from last exposure, or five days for fully vaccinated children</p> <ul style="list-style-type: none"> <li>• Proof is not required</li> <li>• One negative test is required, however, additional testing is recommended thereafter</li> <li>• Siblings of an unvaccinated close contact can continue attending their respective program, however, siblings of positive cases (or should a household member test positive) are considered household close contacts and will be unable to attend childcare for a minimum of 10 days</li> <li>• Following removal from the program, all items (ex: bedding, toys, etc.) will be cleaned and disinfected according to established guidelines. Items that cannot be cleaned and disinfected (ex: paper, books, cardboard puzzles) should be removed from the program temporarily</li> <li>• If 25% of any cohort is away due to a positive case of COVID-19, that room will close for ten days. Fully vaccinated individuals, and those who have tested positive for COVID-19 within the last 90 days are exempt</li> </ul> <p><b>Please see flow chart (on last page) for additional information on symptoms, close contacts, and positive cases</b></p>
<b>Combining of cohorts</b>	<ul style="list-style-type: none"> <li>• Cohorts' limitations will continue outside of below hours:  <b>SUNSHINE/RAINBOW CAN MIX: 7:30-8:30/4:30-5:30</b>  <b>BUTTERFLY/MOONLIGHT/FIREFLY CAN MIX: 7:30-8:30/4:30-5:30</b> </li> </ul>
<b>Drop Off/ Pick Up</b>	<ul style="list-style-type: none"> <li>• Mask use for picking up/drop off is strongly recommended to allow safe communication between the educator and parent/guardian as needed</li> <li>• Mask use for any individual entering the program is a requirement</li> <li>• Parents/guardians are unable to enter the program and are asked to call ahead prior to arriving for pick up/drop off to allow us to get your child ready/greet you at the entrance</li> <li>• Non-essential visitors and volunteers will not be permitted into the program at this time</li> <li>• The back gate (Sunshine/Rainbow entrance) will be closed at 5:30 sharp. Any pick-ups after this time are considered late. You can pick up your child at the main entrance</li> </ul>
<b>Food/Snack Services</b>	<ul style="list-style-type: none"> <li>• No activities involving child participation in food preparation are allowed</li> <li>• There will be no common food items</li> </ul>

	<ul style="list-style-type: none"> <li>Educators will serve the food to the children while wearing a mask and gloves</li> </ul>
<b>Program Planning</b>	<ul style="list-style-type: none"> <li>Routines of day will remain as consistent as possible, while continuing to stagger cohorts</li> <li>Children are discouraged from bringing in non-essential personal items to the program (except for comfort items/nap blankets, when necessary, show and share on outlined days)</li> <li>All shared sensory activities will be available</li> <li>Items that cannot be adequately cleaned and disinfected will temporarily be removed from room after use (ex: natural materials such as acorns, sticks, cardboard, etc.)</li> <li>Outdoor activities and nature walks continue to be a priority in planning</li> </ul>
<b>Cleaning</b>	<p>Enhanced protocols respect to cleaning and disinfecting throughout the day as the health and safety of the children is our number one priority.</p> <ul style="list-style-type: none"> <li>Any item that has been placed in or near a child's mouth will be immediately put into a designated bucket to be cleaned and disinfected</li> <li>Bleach solution to 1000ppm (4 tsps. of bleach to 1L of water) will be used to clean all toys, surfaces, and objects in the space</li> <li>Cleaning and disinfecting of toys will be done either by the three-sink method or using a commercial dishwasher</li> <li>All bedding remains in the program. Educators are responsible for washing items weekly as per Health and Safety Standards</li> <li>Cleaning charts are posted in the bathroom, cohort rooms and kitchen. Additional charts are posted to ensure sanitization of frequently touched objects and surfaces (doorknobs, handles, etc.)</li> <li>Cohorts will be required to wash hands before entering/leaving different spaces of the program</li> </ul> <p>Staff and children are frequently reminded throughout the day to follow proper hand hygiene and respiratory etiquette (ex: wash hands frequently, sneeze/cough into their elbow, put used tissues in the garbage can and wash hands immediately, etc.). Approved Alberta Health signage and developmentally appropriate visual cues are posted around the program as reminders.</p>



\*10 days for an unvaccinated individual or a partially vaccinated individual. 5 days for a fully vaccinated individual.

\*\*Fully vaccinated individuals without symptoms may attend.